



Established 1925

KANSAS GEOLOGICAL SOCIETY

BULLETIN

Volume 90 Number 2

March—April 2015

IN THIS ISSUE

Memorial:
Orlin Phelps
Page 18

**Transporting Oil:
A quick overview**

Ernie Morrison
Page 10



Robert F. Walters Digital Library

The most complete source for Kansas data

Database updated nightly

Day or Night
You can get to the data as you need it

www.kgslibrary.com

To Join: call 316-265-8676

Search Results Table:

All Names	County	Date	Year
WALTON, WALTER F.	COFFEE	1910	1910
WALTON, WALTER F.	COFFEE	1911	1911
WALTON, WALTER F.	COFFEE	1912	1912
WALTON, WALTER F.	COFFEE	1913	1913
WALTON, WALTER F.	COFFEE	1914	1914
WALTON, WALTER F.	COFFEE	1915	1915
WALTON, WALTER F.	COFFEE	1916	1916
WALTON, WALTER F.	COFFEE	1917	1917
WALTON, WALTER F.	COFFEE	1918	1918
WALTON, WALTER F.	COFFEE	1919	1919

Table of Contents

Features

Featured paper.....	10
Memorial	18

Departments & Columns:

KGS Tech Talks	4
President's Letter	7
Advertiser's Directory	8
From the Manager.....	9
KGS Board Minutes	10
Professional Directory	19 & 20
Exploration Highlights	24 & 25
Kansas Geological Foundation Memorials.....	26

ON THE COVER:

Oil tanker derailment in West Virginia. A case for pipelines?
See related article by Ernie Morrison on page 10. Photo on front cover from
Zig Zag,: A Warrior publication

CALL FOR PAPERS

The Kansas Geological Society Bulletin, which is published bimonthly both in hard-copy and electronic format, seeks short papers dealing with any aspect of Kansas geology, including petroleum geology, studies of producing oil or gas fields, and outcrop or conceptual studies. Maximum printed length of papers is 5 pages as they appear in the Bulletin, including text, references, figures and/or tables, and figure/table captions. Inquiries regarding manuscripts should be sent to Rebecca Radford, manager@kgslibrary.com or mailed to 212 N. Market, Ste. 100, Wichita, KS 67202. Specific guidelines for manuscript submission appear in each issue of the Bulletin, which can also be accessed on-line at the Kansas Geological Society web site at <http://www.kgslibrary.com>

SOCIETY Technical Meetings

2015 Technical Talks

Mar. 3— *“Woodford Shale as a Source/Reservoir Rock”* - Brian Cardott

Apr. 9— (*A Thursday*) *“Fort Hays State Student Presentations”* - Dr. Hendratta Ali’s petroleum class

Apr. 23— (*A Thursday*) *“Pressure Architecture of Selected Sedimentary Basins: Implications for Oilfield Brine Disposal in Oklahoma”* - Dr. Jim Puckette

May 26—WSU Student Field Studies—Larry Richardson’s class

For More Information or suggestions of speakers please contact Dave Clothier: dave@mccoypetroleum.com

Note: For those geologists who need 30 points to renew their licenses, there will be a sign-in sheet at each presentation and also a certificate of attendance.

*Tech Talks are held at Landmark Square
212 N. Market—4th floor
In the Wisdom Center*



**Please remember to check the website for the most up to date information on Technical Talks
<http://www.kgslibrary.com/techtalks.cfm>**



BOARD OF DIRECTORS

PRESIDENT

Frank Mize

PRESIDENT-ELECT

Tim Hellman

SECRETARY

Chuck Brewer

TREASURER

Leah Kasten

DIRECTORS

Brian Fisher

Ted McHenry

Paul Gunzelman

ADVISORS

Alan DeGood

M.L. Korphage

COMMITTEE CHAIRMEN

Advertising

Kent Scribner

Advisory

Tom Hansen

Larry Richardson

Annual Banquet

Bob Bayer

Budget Committee

Leah Kasten

Bulletin

Rebecca Radford

Continuing Education

Robert Cowdery

Distinguished Awards

Brian Fisher

Environmental

Kent Matson

Field Trip

Larry Skelton

Fishing Tournament

Randy Teter

Future Plans

Chuck Brewer

Golf

David Barker

Historian

Larry Skelton

Investment

Leah Kasten

Library

Roger Martin

Ted Jochems

Membership

Larry Friend

Nomenclature

John H. Morrison, III

Picnic

Wes Hansen

Public Relations

Robert Cowdery

Shooting Tournament

Larry Richardson

Technical Program

Dave Clothier

Ticket Sales

Bill Shepherd

A.A.P.G. DELEGATES

Ernie Morrison
2018

Douglas Davis
2018

BULLETIN STAFF

EDITOR

Ernie Morrison (316) 264-6366

ADVERTISING

Kent Scribner
Stelbar Oil Corp. (316) 264-8378

PROFILES/MEMORIALS

Robert D. Cowdery
Consultant (316) 267-9030

EXPLORATION HIGHLIGHTS

John H. Morrison, III
Independent O&G (316) 263-8281

STATE SURVEY

Rex Buchanan
KS Geological Survey (785) 864-3965

SOCIETY NEWS

KGS Library (316) 265-8676

EDITOR EMERITUS

Wes Hansen (316) 263-7313
Larry Richardson (316) 262-8427

K.G.S. LIBRARY

PHONE 316-265-8676 FAX 316-265-1013

email: frontdesk@kgslibrary.com or

Web: www.kgslibrary.com

LIBRARY MANAGER

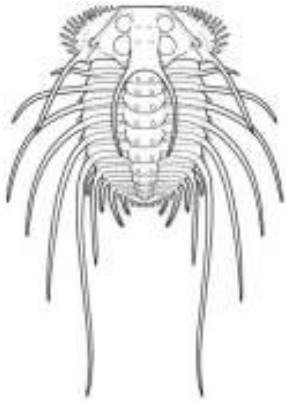
Rebecca Radford 265-8676

manager@kgslibrary.com

The KGS *Bulletin* is published bi-monthly by the Kansas Geological Society, with offices at 212 North Market, Wichita, Kansas 67202 Copyright 2014, The Kansas Geological Society. The purpose of the *Bulletin* is to keep members informed of the activities of the Society and to encourage the exchange and dissemination of technical information related to the Geological profession. Subscription to the *Bulletin* is by membership in the Kansas Geological Society. Limited permission is hereby given by the KGS to photocopy any material appearing in the KGS *BULLETIN* for the non-commercial purpose of scientific or educational advancement. The KGS, a scientific society, neither adopts nor supports positions of advocacy, we provide this and other forums for the presentation of diverse opinions and positions. Opinions presented in these publications do not reflect official positions of the Society.



**Twenty-two Trucks Serving
Kansas—Colorado—Texas—Nebraska—Illinois**
DST's
Back Pressure testing (G1 & G2)
Slick line services using the same Weatherford
Electronic Pressure Gauges used on DST's



1-800-728-5369
FAX 1-785-625-5620

www.trilobitetesting.com
trilobite@eaglecom.net

SHOPS LOCATED IN:
Hays, KS
Scott City, KS
Pratt, KS
Hugoton, KS
Oberlin, KS
Clay City, IL

CAN YOU NAME THE CRITTER?

Sponsored by Trilobite Testing, Inc.

Is your paleo up to date?

If you know the name of the trilobite,
submit your guess via e-mail to
manager@kgslibrary.com

Remember that *Trilobite Testing* is
sponsoring your efforts, so be sure to thank
Paul Simpson the next time you see him.

CONGRATULATIONS!!

**Tom Dudgeon correctly identified
The last one as: Andegavia**

Bulletin committee members and PhD's in
Paleontology are prohibited from entering.



THE SURFACE FEATURES OF KANSAS
GEOLOGIC MAP

Get Your Maps copied at the KGS library
We can scan, copy, and print up to 44" wide
Color or Black & White
Solid Color @ \$4.00/sq. ft.
Line maps with color @ \$3.00/sq. ft.

President's Letter

Dear KGS Members,

This year's banquet was certainly one to remember. The highlight of the evening began with the background story of Bob O'Dell's continuous involvement with our Society, and all of his unselfish actions to all of our benefit. But the high water mark was Bob's powerful response upon receiving this award. It was one of the most moving demonstrations of good character I have ever witnessed.

It was also a testimony of many other distinguished individuals of good character in our industry. Dave Clothier and his Distinguished Awards committee certainly deserve our compliments for a job well done in choosing such a deserving candidate. Additionally, we owe thanks to Doug Davis for guiding us humorously through the evening, and Bob Bayer for his flawless planning of the event.

I would encourage all of our members to regularly attend our technical sessions. Dave Clothier's group, under Bob Cowdery's wing, continue to provide us with excellent and informative sessions. If you are unsure of what is on our agenda, please either call our office or preferentially, check our website for upcoming speakers and times.

This year's AAPG convention is May 31 through June 3 in Denver, Colorado. Early registration ends in the first few days of April, so get your reservations in quickly if you wish to save some money.

In our last board meeting we had a long discussion about how we can gain a greater yield for our liquid accounts. That and some building issues will continue to be our primary focus in the short term, along with the general operation of the digital and paper library.

The picture, which I neglected to caption last month, is one that falls into the category of "my bucket list", where I am standing to the right of the spread-center of the North American Plate and the European Plate, northeast of Reykjavík, Iceland. This picture was taken early last fall. If anyone else has any "bucket list" photos, please submit them to Rebecca, and we will see what we can do about including them in the Bulletin.



Frank S. Mize
President 2015



KANSAS STATE UNIVERSITY

GEOLOGY
DEPARTMENT

GRADUATE EDUCATION
for active professionals

Through: Leading to:
Workshops Academic credits
Field Trips Certificates (pending)
Distance Education M.S. degree

With specializations in:
Petroleum Geology
Groundwater
Exploration Geophysics
Environmental Geochemistry

Information:
KSU Continuing Education: www.dce.ksu.edu
KSU Geology Department: www.ksu.edu/geology
KSU Graduate School: www.ksu.edu/grad
or e-mail George Clark, interim dept. head: grc@ksu.edu

ADVERTISER'S DIRECTORY

	<i>page</i>
Allied Cementing Company, Inc	23
American Energies Corp. Nitrogen Rejection	13
Breckenridge Exploration Company	15
Duke Drilling	23
GeoSteering	14
Global Geophysical	15
Kansas Geological Foundation	26
Kansas State University	8
Lockhart Geophysical	23
Lone Star Geophysical Surveys	16
MJ Systems	21
MBC Well logging	23
Murfin Drilling Company, Inc	23
Neuralog	15
PARAGON Geophysical Services, Inc	13
Pratt Well Service	15
Professional Directory	19-20
Sunrise Oilfield Supply	23
Tomcat Drilling	23
Trilobite Testing	6
Walters Digital Library	2
Weatherford	27
Well Enhancement Services	14

Log in to
Walters Digital Library
At
www.kgslibrary.com

Log in as our guest
and see the Society's Database

A convenient way to see what
you might want to order!
Call or email your order to:
316-265-8676
frontdesk@kgslibrary.com

ADVERTISER'S RATES: 2015

Full Page	B&W	Color
6 issues	\$2,000	\$2,500
3 issues	\$1,080	\$1,325
1 issue	\$480	\$525
1/2 Page		
6 issues	\$1,000	\$1,500
3 issues	\$540	\$825
1 issue	\$225	\$350
1/4 Page		
6 issues	\$600	\$900
3 issues	\$325	\$525
1 issue	\$150	\$250
1/8 Page		
6 issues	\$300	\$500
3 issues	\$175	\$325
1 issue	\$75	\$185
Professional Ad (Business Card)		
6 issues	\$90	\$180

For one-time ads, call Rebecca at 316-265-8676

From The Manager

Dear Members,

Well it has certainly slowed down in Kansas and everywhere else as far as drilling activity. Let's hope this doesn't last too long.

I am very pleased to announce that Ernie Morrison has agreed to be the new Editor of the Bulletin. Thank you Ernie! He will be working to bring you more articles of interest so if you have anything to offer, please let Ernie or myself know. Many of you do have some time on your hands right now so maybe you should be thinking about writing up a paper of interest to your peers.



The library is working to get those Eastern Kansas logs and plotted geo reports into our database and scanned to be added to Walters Digital Library. I try to keep an updated graphic on the web page to let you know what has been added.

We had a wonderful time at the Annual Banquet this year. We honored Bob O'Dell as Honorary member and we also had one 50 year member this year, Billy Johnson. Photo below and more photos throughout this Bulletin.

Stay warm and remember that spring is just around the corner!

Respectfully submitted,
Rebecca Radford
Manager



Billy Johnson receiving his 50 year pin from Dave Clothier



**Let Us Print Your Geo Reports
And Save Your Time For Finding More Oil & Gas
Top Quality Color Printing For Our Membership**

Email your files to: kgsorders@gmail.com

Transporting Oil: a quick overview by Ernie Morrison

On February 15, 2015 a 109 crude oil tanker train had a 26 tanker car derailment with 19 of the tankers involved in the ensuing fire. One of the factors that could have resulted in the derailment could have been the severe weather conditions with snow drifting onto the tracks. This all happened near Boomer, West Virginia; a town of about 615 located in South Central West Virginia on the Kanawha River. Due to the remote location there was one person injured and one home destroyed. Some of the crude oil was spilled into the Kanawha River causing possible problems in the downstream; not surprising when you consider each tank car contained about 30,000 gallons of Bakken crude oil.



Photos by Dan Tomey



As you can see the winter conditions have added to the problem of clean up with some concern the oil is under the ice in the river.

In an amazing bit of bad luck on February 14, 2015 29 tanker cars out of 100 that were carrying Bakken crude oil derailed and caught fire in a remote area of Ontario, Canada. Late reporting of this incident has caused concern for the Mattagami First Nation, an Indian Tribe that fishes and trapes in the area. Again, due to the remote location of the spill no injuries were reported.



Although the two accidents that took place earlier this month were terrible, neither was the disaster that occurred in Lac-Meganitc, Quebec in July of 2013. An unattended tanker car train full of Bakken crude rolled down a hill, derailed and killed 47 people. The train was parked on a hill with one attendant when the brakes that were set failed. About one-third of the cars were breached which resulted in this accident that also destroyed 30 buildings in the town.

Photo from Zig Zag: A Warrior Publication



Photo from Wikipedia



Photo from The Globe

The news reports refer again and again about the Bakken crude and how it is so explosive. The National Petroleum Council reports the properties of the Bakken being very similar to the bench mark West Texas Intermediate. This would make one think that the crude is a good clean crude but not anymore volatile than many other crude oils. More safety measure have been implemented since the disaster in Lac-Megantic. New tankers have been and are being built to replace the outdated and unsafe cars.

The slow down due to oil prices may alleviate some of the dangers of railroad transport due to the decrease in volume of trains carrying crude. According to the Association of American Railroads in 2008 railroads originated 9,500 carloads of crude oil and in the first half of 2014 had over 229,798 carloads of crude oil. In response to this, railroads have taken measures to insure the safety of transporting crude oil. Over 20,000 emergency responders are trained each year and training continues. As of July of last year specialized track side detectors have been installed at least every 40 miles with routes that trains of 20 cars or more are transporting crude oil. In addition to these detectors that measure the wheel bearings and the heat generated, the Rail Corridor Risk Management System has been implemented to model and report over 27 different risk factors such as trip length, population density and hazmat volume. Railroad transport is being enjoyed as a supplement to crude that has historically been transported by pipelines. This increase is due, in a large part, to the success within the Bakken Shale and the remote nature of the crude or lack of pipeline infrastructure.

The advocates for the Keystone XI pipeline point to these rail accidents and make a case for pipeline installation. This sounds as if it is the answer to all the transport problems but in April 2013 a pipeline spill in Mayflower, Arkansas resulted in the spillage of thousands of barrels of crude oil. In January a pipeline in Montana ruptured and spilled over 30,000 gallons of Bakken crude into the Yellowstone River. This is an area where bald eagles were nesting and an endangered species of sturgeon is found.

Is trucking the only safe solution? With the volume of crude oil that needs to be transported to make the US more energy sufficient, trucking is almost out of the question. It is a matter of more pipelines that are monitored. Remember that pipelines have less spills but they tend to spill more volume of crude oil. I think you can discount the Bakken oil as being too explosive to transport and it helps to remember that the Bakken is one way to help the US gain some sort of energy independence.



Our emcee for the evening Doug Davis



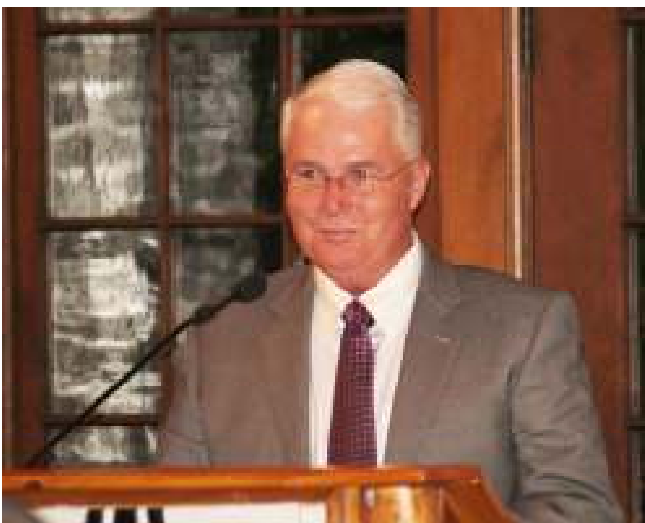
Outgoing President Brian Fisher receiving his hammer and Past President's pin.



2015 President Frank Mize addressing the crowd.



Our newest Honorary Member, Robert O'Dell with his gold hammer.



Dave Callewaert telling us a few fun stories about Mr. O'Dell



Chuck & Gina Brewer with Pat Hansen



Providing Quality Seismic Since 1993

Visit our website at



3500 N. Rock Rd., Bldg. 800, Wichita, KS 67226 316-636-5552
paragon@pargongeo.com



Hendratta Ali, professor at Fort Hays State
visiting with Marty & Twyla DuBois

NOTICE!!!! WSU GEOLOGY CLUB & Papa John's Pizza

Papa John's offered WSU student organizations an opportunity to raise monies for their organizations.

The **WSU Geology Club** is participating
And **YOU** can help them!

When ordering pizza from Papa John's,
Use this code: **WSU004**
(those are zero's, not letter O)

With this code, the customer will receive 40% off their entire online order and WSU's AAPG Student Chapter will receive 10% of the money spent on the order.

**Eating pizza tonight?
Let's help WSU Geology Club!**

Monies raised will be used towards gas money to travel to local schools when they promote the geosciences to grade schools, registration costs for workshops, seminars and AAPG Student Expos, and social and academic events like an upcoming "Lunch and Learn" series next fall.



WSU Geology Students on their trip last spring to study the Guadalupe Mountains and Carlsbad Caverns

WOULD YOU LIKE TO INCREASE YOUR PRODUCTION AT A FRACTION OF THE COST OF HORIZONTAL DRILLING?



Well Enhancement Services, LLC is jetting laterals utilizing new technology and coiled tubing. We now have the ability to place hundreds of gallons of acid hundreds of feet away from the well bore. This allows us to not only enhance existing production but to produce reserves previously unreachable. It has established itself by repeatedly increasing production in both new and existing wells. Contact us for more information, questions or to schedule your next well with **WES**.



“Tap into success.....with WES”

Please Contact Us:

Phone: (785) 625-5155

Fax: (785) 625-4151

Field: (785) 259-4638

wesofhays@hotmail.com
Box 87, Schoenchen, KS 67667

www.**GeoSteering**.com

281-573-0500
info@geosteering.com

Free introductory consultation with modeling: let us demonstrate whether images or propagation resistivity could add value to your well.

Personnel with degrees & 20+ years of oilfield experience

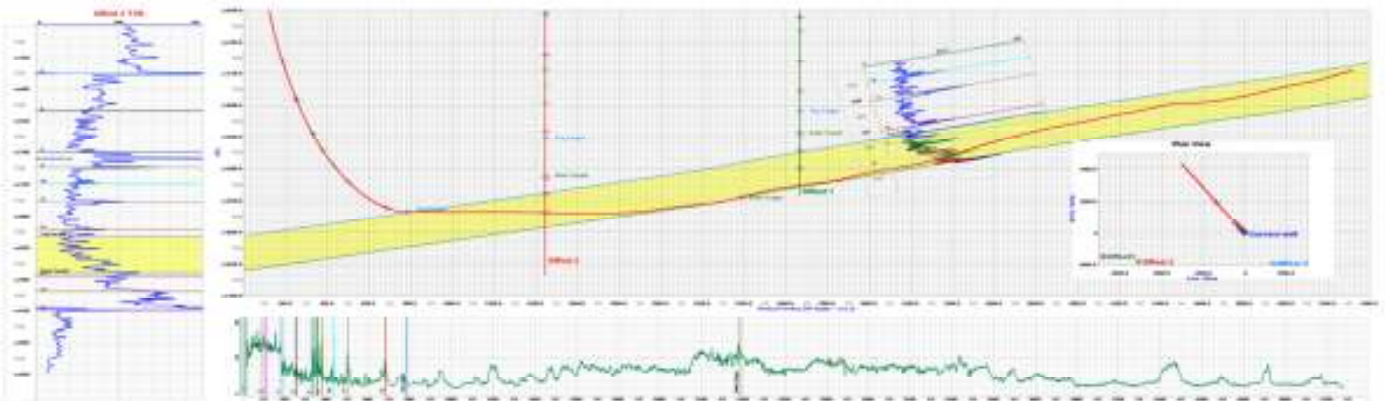
Proprietary software

TST interpretation for GR only jobs

Image displays / interpretation for jobs with azimuthal GR, resistivity or density

Resistivity modelling / interpretation for jobs with LWD propagation resistivity

Real-time (always)





Call us 24
Hours-A-Day
620-672-2531



Complete Well Service

Since 1946

P.O. Box 847
Pratt, Kansas 67124

Kenneth C. Gates
President

Kevin C. Gates
Vice President

1-800-660-7974
Fax: 620-672-5902

Member KIOGA /AESC

Equipment yard & field office:
1 3/4 miles North on Highway K-61 from 54 & K-61 Junction

- Experienced Crews · Rod & Tubing Service · Workover & Completions · Swab Tanks
- Pole Masts-Single and Double Derricks · Air Foam Unit · Monitor & Water Well Drilling
- Reverse Circulating Pump & Power Swivel Equipment · Statewide Oilfield Hauling
- Environmental Cleanup · Vacuum Trucks/Water Trucks · Dirtwork-Dozers, Grader, Backhoe

Hydrovac Excavation Service

- Cleaning cattle guards
- Mud tank cleaning
- Potholing · Trenching
- Pipeline Crossings



www.prattwell.com



Eagle Vision Video
Well Inspection



**BRECKENRIDGE
EXPLORATION
COMPANY, INC**

SEISMIC ACQUISITION

Check us out at www.breckex.com

Breckenridge Exploration Co., Inc.
Highway 180 E
P.O. Box 789
Breckenridge, TX 76424
Bus: (254) 559-7566

Denver Colorado Office
600 17th Street, Ste. 2800 S
Denver, Colorado 80202-5428
Bus: (303) 563-5301
Mob: (254) 559-0587

Sensible Seismic Acquisition in the Mid-Continent and the Rockies



Neuralog
Turning Paper Into Petroleum

Bryan Mills
Regional Sales Manager

Solutions for Today's Geoscientists

- Scan, Print & Digitize - Logs & Maps
- Geological Interpretation
- Master E&P Data Management

1.281.240.2525

bmills@neuralog.com · www.neuralog.com

NORTH AMERICA KNOW-HOW

EXPERTS IN NORTH AMERICA SEISMIC



Download Case Study: www.globalgeophysical.com/NAM
or Contact us at NAM@globalgeophysical.com

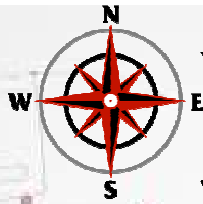
North America. Our people know it. With hundreds of years of cumulative experience, our people have the know-how and capacity to get it done, no matter the job.

The efficiency and reliability of our crews are matched only by that of our technology. As the first company to go 100% nodal, we can offer total flexibility in terms of seismic survey design, program size and type of environment. Remarkably effective in all conditions, AutoSeis®, like our crews, delivers in any terrain, on every project. With the largest single inventory of nodal recording stations, we can record cost-effective data sets with high-density long offsets, rich azimuth, improved spatial resolution and increased signal-to-noise ratios.

Having worked in almost every major basin in the U.S., Global has proven successful across diverse terrains including arctic, mountain range, dense forest, farmland and urban environments. Explore the benefits of our North America expertise.

tel +1 713-972-9200
www.globalgeophysical.com

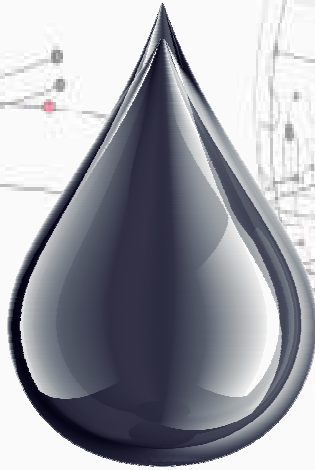




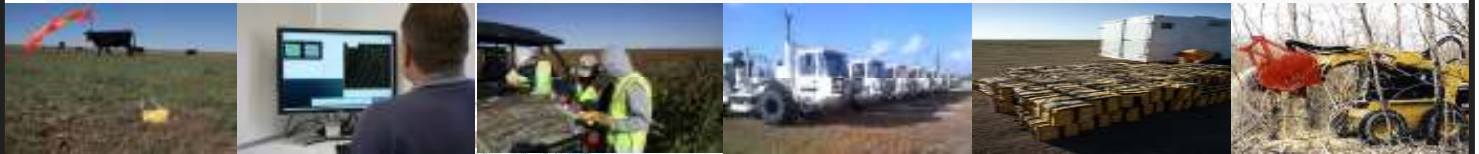
LSGS

LoneStar Geophysical Surveys

It's Real Simple. It's Real Effective.



Locating every last drop.



Superior Seismic Acquisition System



Data Recording 2D, 3D, 4D & VSP



AHV-IV™ Commander 364



Permitting Services



HSE Management System



Front-End Services



Shot Hole Drilling



Brush Clearing



Chainsaw Crews



Heliportable



Submit a bid request online:

www.lstargeo.com

441 So. Fretz Avenue Edmond, Oklahoma 73003 (O) 405.726.8626 (F) 405.285.8521 lsgs1@lstargeo.com



Some of the McCoy Petroleum folks enjoying the evening



KGS employee Lois Stewart

The KGS Library is pleased to announce a new service

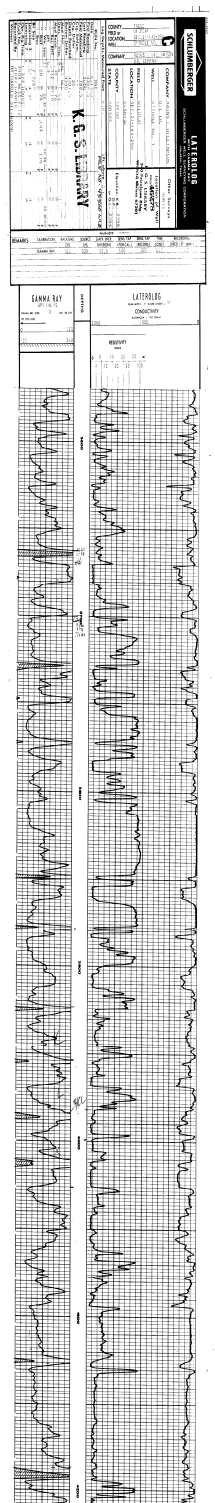
Creating
LAS files
from our logs
or yours

**\$20.00 per
curve!!**

Quick
turn-around

Send us your log file
or tell us which of
ours you would like
converted.

316-256-8676



The Kansas Geological Society maintains its ownership and copyright when converting library log files to LAS

Memorial - *Orlin Phelps*



Orlin R. Phelps was born on March 25, 1924 in Beaumont, Kansas and died January 27, 2015. Orlin began his education in a one-room country schoolhouse, graduating from El Dorado High School in 1941. He left soon after graduating to join the Army Air Corps working his way to serve as a Fighter Pilot before his discharge in 1945. After his military service, he entered Wichita University to study engineering; but after exposure to a geology course, he was hooked on that discipline and excelled as he did in anything he set his mind to.

As a geologist his main exploration for petroleum was primarily in northwest Kansas. He surpassed his goal of having a discovery for every year he lived. A special love he had was for the landscape tree farm he started on his father's farm in Augusta, KS in the early 1990's. He received much joy in growing the trees and providing their beauty to home owners in Sedgwick and Butler Counties. Throughout his life he showed talent as a scientist, inventor, carpenter, entrepreneur horticulturist, aviator and sports car enthusiast. Orlin was a long-time member of the Kansas Geological Society.

Orlin is survived by his son, Olin Gregory Phelps (Melissa S. Phelps); daughters, Marsha Kay Phelps and Brenda Sue Phelps of Wichita, KS; son Shawn Edgar Phelps of Augusta, KS; grandchildren, Alex Phelps and Zach Phelps of Augusta, KS and Tanner Kaye Phelps-Sampino of Wichita; the mother of his children, Mary Nadine Phelps; and his elder sister, Rogene Stephens of Lewisville, TX. He was preceded in death by his father and mother, Orlin Alison Phelps and Anna Mae Phelps (Edgar); brother, Donald E. Phelps, and sister, Treva Demo, of El Dorado, KS.



Some crowd shots from this year's Banquet

PROFESSIONAL DIRECTORY

Kirk Rundle
Consulting Geophysicist

*3D Seismic Design, Acquisition to Processing QC,
 Interpretation and Analysis, Subsurface Integration*
 7340 W. 21st. N., Ste. 100
 Wichita, Kansas 67205

Office: 316-721-1421 Fax: 316-721-1843
 Email: kirk@rundlegeo.com

ROGER L. MARTIN
Independent Petroleum Geologist

200 E 1st St, Ste 405, Wichita, KS 67202

Office 316-833-2722 Cell: 316-250-6970
 KS Field Cell: 316-655-1227
 Fax: 316-425-3829
 Email: rogermartingeo@yahoo.com


Blue Ribbon Drilling, LLC
 PO Box 279, Dewey, OK 74029

Phone and Fax: 918-534-2322
 John's Cell Phone: 918-440-9639
 Larry's Cell Phone: 918-440-9638
 Jeff's Cell Phone: 918-440-9647
 Email: johnroutree@bratco-operating.com

ALFRED JAMES III
Petroleum Geologist
 Kansas - Colorado - Utah

200 W. Douglas, Ste. 525, Wichita, Kansas 67202

SIPES # 1111
 Office (316) 267-7592
alfred.james55@yahoo.com



Banks Resources

Scott Banks
 Petroleum Geologist
banksbs@aol.com
 Cell: 316.253.8550

1700 N. Waterfront Pkwy.
 Bldg. 300 • Suite C
 Wichita, KS 67206

Phone: 316.558.5262
 Fax: 316.558.5263

M. Bradford Rine
Honorary Life Member—Kansas Geological Society

*Licensed Geologist—KS, #204
 Registered Professional Geologist—Wyo. # 189
 Certified Geologist—A.A.P.G. # 2647
 S.I.P.E.S. # 1584 S.P.E. #109833-4*

PROSPECT EVALUATION • PROSPECT GENERATION
 WELLSITE SUPERVISION • EXPERT TESTIMONY • OPERATIONS
 PROPERTY EVALUATION • RESERVOIR STUDIES
 DRLG./COMP. CONSULTATION

Suite 415 Office: (316) 262-5418
 100 S. Main Fax: (316) 264-1328
 Wichita, KS 67202 Cell: (316) 250-5941

WESLEY D. HANSEN
Consulting Geologist

Well site Supervision • Geologic Studies
 212 N. Market, Ste 257
 Wichita, Kansas 67202
 Off: (316) 263-7313
 Mobile: (316) 772-6188
whansen4651@sbcglobal.net



Paul Gunzelman
 President/Geologist

Wichita, Kansas 316.634.6026
 email p.gun@sbcglobal.net



KEVIN L. KESSLER
 INDEPENDENT/CONSULTING PETROLEUM GEOLOGIST

WELLSITE SUPERVISION • GEOLOGIC RESEARCH
 OIL & GAS PROSPECTS
 KANSAS & EASTERN COLORADO

MAILING ADDRESS PHONE
 1199 N. PONDEROSA RD. RES.: (316) 522-7338
 BELLE PLAINE, KS 67013 MOBILE: (316) 706-6636
 EMAIL: KKESSLER1199@AOL.COM

MELLAND ENGINEERING, INC.
Petroleum Engineering & Geological Consulting

James E. Melland, P.E., P.G.
 President

Office: (620) 241-4621 Fax: (620) 241-2621

jamesm@mellandengineering.com
www.mellandengineering.com

P.O. Box 841, McPherson, KS 67460

KGJ ENTERPRISES

Contract Oil & Gas Accounting &
 Office Management

Kathryn G. James, MBA (316) 775-0954
 4278 SW 100th ST. (316) 250-5989
 Augusta, KS 67010 kgjames@onemain.com



Steve Van Buskirk
Petroleum Geologist
 Van Buskirk Geo-Consulting

15171 Ridgfield Ln Home: 719-487-8297
 Colorado Springs, CO 80921 Cell: 719-293-2900
 and Steve@vbcinc.com
 514 Ramsey
 Kiowa, KS 67070 **Available for Well site work**



Geotech & Design Services

7171 Highway 6 North, #202
Houston, Texas 77095

Data digitizing, drafting & computer graphics

Tel: (281) 858-7100

Fax: (281) 500-8534

heather.wilson@geotechmap.net

Heather Wilson
Account Manager

www.geotechmap.net



Banquet Crowd Shots



We Invite You To join

Kansas Geological Foundation

*\$50.00 membership is
tax deductible*

Call 316-265-8676

*Or send checks to:
Kansas Geological Foundation
212 N. Market, Ste. 100
Wichita, KS 67202*

The Following Are For Sale

Kansas Completion Cards:
Several sets (call for more information)

Oklahoma Completion Cards:
2 sets—entire state

Nebraska Completion Cards—West ranges

New Mexico Completion Cards

North Dakota Completion Cards

Utah Completion Cards

Microfiche Electric Logs
Kansas
Oklahoma
Texas

Geological Office Furniture:

- 8-drawer completion card cabinets—21 available
- 7-drawer cabinets—10 available
- Map cabinets—metal—2 available
- Map racks—different sizes—6 available

Call: 316-265-8676
Ask for Ted

WE OFFER 3 KINDS OF SERVICES

**GOOD—CHEAP—FAST
BUT YOU CAN PICK ONLY TWO**

GOOD & CHEAP WON'T BE FAST

FAST & GOOD WON'T BE CHEAP

CHEAP & FAST WON'T BE GOOD

**Kansas Geological Foundation
Video / DVD Collection**

The KGF has an extensive collection of videos available for check-out at no charge.

Only pay for shipping back.

These are ideal for classroom or general public viewing.

See the web for titles & descriptions
www.kgfoundation.org

Call 316-265-8676
Ask for Janice to check out videos



Logs Since 1971

www.mjlogs.com

6 MILLION LOGS

DEPTH REGISTERED

**INTERNET
DOWNLOADS**

**ONLINE
SEARCH**

SEARCH AND FILTER BY DEPTH

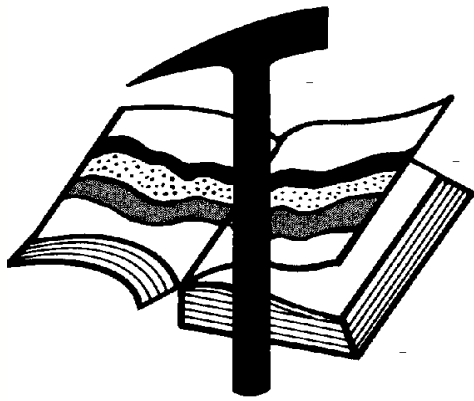
OWN THE LOGS

LogSleuth Software

CLUB WEB

WEB SITE CATALOGUE

1-800-310-6451



Kansas Geological Foundation

Web Site: www.kgfoundation.org

**212 North Market
Wichita, Kansas 67202**

A not-for-profit educational and scientific corporation

GOALS:

- promote geology and earth science
- preserve geological records
- establish memorials and endowments
- support field trips and seminars
- financial aid and grants to students

PLEASE HELP SUPPORT THE FOUNDATION

Kansas Geological Foundation Services

The Kansas Geological Foundation provides the following services as a part of the organization's commitment to educate the public regarding earth science.

Speaker's Bureau

A list of speakers available to talk about various aspects of geology may be obtained by contacting Janice Bright at the KGS Library, 265-8676. This service is free to the public.

DVD/Videotape Library

The KGF maintains a DVD & videotape library focused primarily on the various fields of earth science. These tapes may be checked out without charge by the public. To obtain a list of tapes, please contact the KGS Library, 212 N. Market, Ste. 100, Wichita, KS 67202, or call Janice Bright at 265-8676.

The Kansas Geological Foundation was founded in March, 1989 as a not-for-profit corporation under the guidelines of section 501(c)(3) of the tax code to provide individuals and corporations the opportunity to further the science of geology. It is dedicated to providing charitable, scientific, literary and educational opportunities in the field of geology for the professional geologist as well as the general public.

KGF can receive in-kind donations through which the donor may receive a tax deduction. Of equal importance, the KGF provides the financial resources to sort, process and file this data at the KGS library. If you have a donation to make, please contact the KGF at 265-8676.

Your tax-deductible membership donation helps to defray the cost of processing donations and to support public education programs about the science of geology. Annual membership begins at \$50.00 per year. Donations of \$100.00 or more are encouraged through the following clubs:

Century Club	\$ 100 to \$ 499
\$500 Club	\$ 500 to \$ 999
Millennium Club	\$1000 to \$5000
President's Club	\$5000 and over

WESTERN KANSAS
SOUTHERN NEBRASKA



EASTERN COLORADO
OKLAHOMA & TEXAS PANHANDLES

10 Drilling Rigs

10 Well Service Rigs & Roustabout Services

For contract information, please contact:
Blaine Miller / Drilling Department
316-858-8607 (Direct) or 316-267-3241

For contract information, please contact:
Alan Hays, Well Service Sprvsr.
785-421-2103 or 785-567-8739 (cell)

250 N. Water #300—Wichita, KS 67202

East Highway 24—Hill City, KS 67642

DUKE
DRILLING COMPANY

ROTARY DRILLING CONTRACTOR

620 Hubbard PO Box 823
Great Bend, KS 67530
Phone 620-793-8366

100 S. Main, Ste. 410,
Wichita, KS 67202
Phone 316-267-1331
Fax 316-267-5180

TIMOTHY J. SANDERS
tsanders@tomcatdrilling.com
CELL (316) 259-1652

WWW.TOMCATDRILLING.COM

TOMCAT DRILLING LLC

CORPORATE OFFICE
8301 E. 21st North, Suite 360
Wichita, Kansas 67206
PHONE (316) 262-8554
FAX (316) 267-0749

FIELD OFFICE AND YARD
225 NW Highway 270
WOODWARD, OKLAHOMA 73801
PHONE (580) 254-3026
FAX (580) 254-3028

5 ROTARY RIGS SERVING
OKLAHOMA, KANSAS AND
THE TEXAS PANHANDLE

Great Bend (620) 793-5861 **Ness City (785) 798-3843** **Medicine Lodge (620) 886-5926**

Acidizing Available at Medicine Lodge District

Russell (785) 483-2627 **Oakley (785) 672-3452**

2D & 3D Vibroseis Acquisition
ARAM*AIRES Seismic Recording System

1600 Broadway, Suite 1660 • Denver, CO 80202-4915
(303) 592-5220 • info@lockhartgeo.com
for complete information go to: www.lockhartgeo.com

MBC

WELL LOGGING & LEASING
UNMANNED GAS DETECTORS
MUD LOGGING
CERTIFIED INSTRUMENT TECH

AUSTIN GARNER **MARLA GARNER**

24-HOUR PHONE (620) 873-2953
MEADE, KANSAS

FULL LINE SUPPLY STORE
With Pump Shop, New & Used Pipe,
Equipment and Fittings
Exclusive S-55 casing source

STORES:

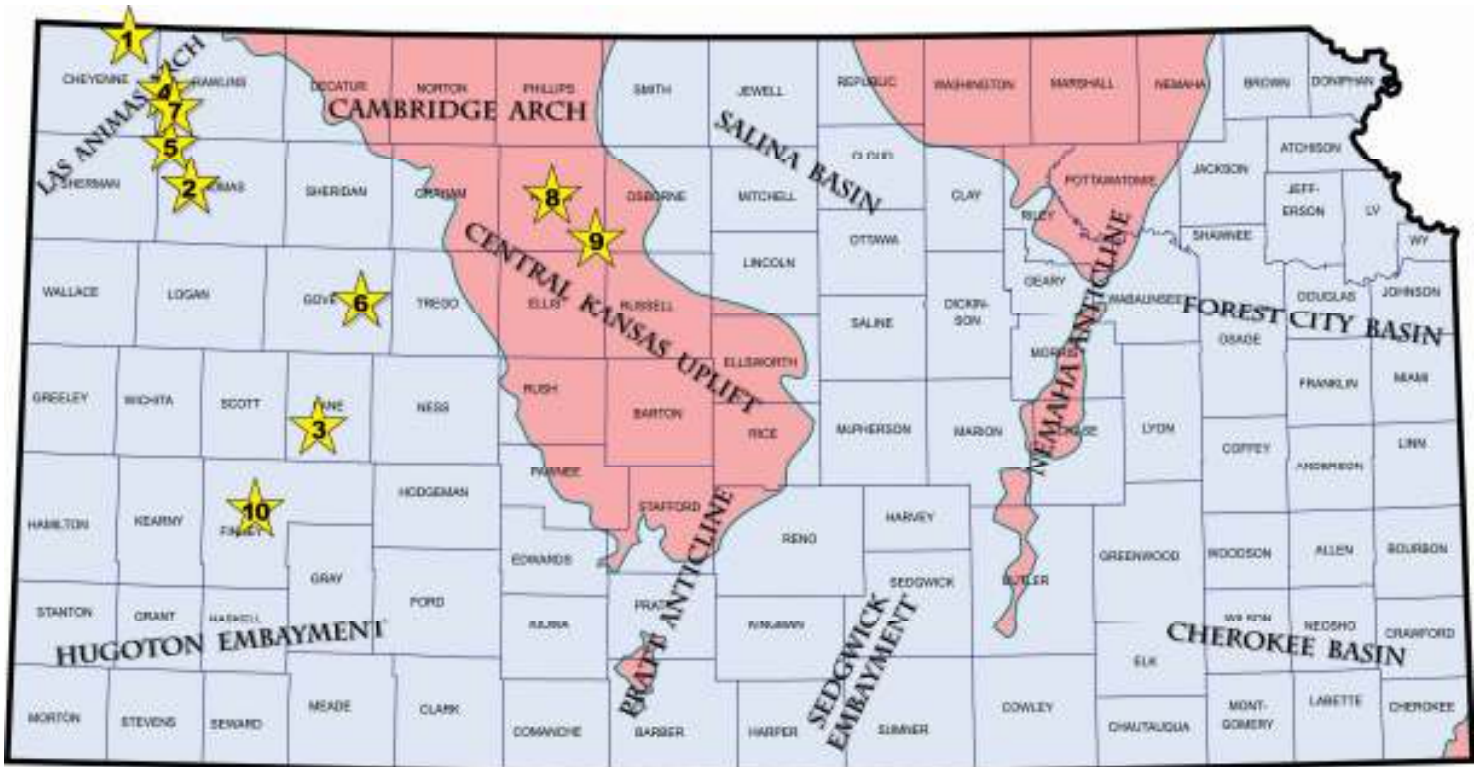
Chanute, KS	620-431-6500	Ness City, KS	800-589-5733
El Dorado, KS	316-321-9323	Osawatomie, KS	913-755-2297
Garden City, KS	877-976-1700	Spivey, KS	620-532-5261
Hays, KS	785-650-0199	McCook, NE	308-345-1542
Hugoton, KS	620-428-6604		

SALES OFFICES:

Wichita, KS	800-777-7672	Denver, CO	303-349-8417
Williston, ND	701-570-9255		

Exploration Highlights

By John H. Morrison, III
Independent Oil & Gas



1-Murfin Drilling Company, Wichita (KS), has discovered new Lansing-Kansas City oil reserves at the 1-29 Bash (API 15-023-21409) exploratory well in Cheyenne County, northwest Kansas. The new Devil's Canyon North pool opener is producing oil in the NE/4 of section 29- T1s- R38W, about thirteen miles north and three miles west of Bird City. The well was drilled to a depth of 5,002 ft in Granite rock. The new reserves lie over one mile north of the Devil's Canyon field (estbl. 1988, LKC oil).

2-VAL Energy, Wichita (KS), has a new Cherokee (Johnson Zone) oil discovery in western Thomas County. The 1-21 Otto (API 15-193-20938) is on pump making an undisclosed amount of oil at site located in the NW/4 of section 21- T8s- R35W, about 7 miles east of the town of Brewster. The wildcat well opens the Schroeder Southeast oil field nearly one and one-quarter miles east of Val's John lease in section 20, which also produced Cherokee oil last year and established the Schroeder East field.

3-Larson Operating Company, Olmitz (KS), is producing oil from the Lansing-Kansas City formation at their 1-32 Lora (API 15-101-22535), spotted in the SE/4 of section 32- T19s- R29W in Lane County. The wildcat well establishes new production over one and one-half miles east of the Clark Southeast oil field (est. 2009, LKC and Marmaton), or about 9 miles southwest of Dighton, Kansas. Rotary total depth was stopped at 4,675 ft. No completion details are available. The new field has been given the name Frontier East.

4-Samuel Gary Jr & Associates, Inc., Denver (CO), has discovered oil deposits in the Celia Sand member of the Marmaton Group at the 1-3 Fisher Cattle Company (API 15-153-21051), spotted in the NW/4 of section 3- T4s- R36W, in Rawlins County. The new Wind Crest West pool opener found new reserves nearly one mile southeast of established production in the Celia South oil field (estbl. 1983, Marmaton, Cherokee oil) and about three miles southeast of the town of McDonald, Kansas. Total depth of the well is 4,949 ft.

5-Raymond Oil Company, Inc., Wichita (KS), has successfully completed the 1 Baird Revocable Trust (API 15-193-20931) as a commercial oil well to open the Sun Dog oil field in Thomas County. Discovery was made in the SE/4 of section 25- T6s- R36W, nearly two miles south of the WWM oil field (estbl. 1979, Marmaton oil). The 4,876 ft deep well is producing crude from the Marmaton (Pawnee) formation, about ten miles northeast of Brewster, Kansas.

6-Questa Energy Corporation, Amarillo (TX), is producing crude oil from the Lansing – Kansas City formation at the 1-36 Bird (API 15-063-22211), located in the NW/4 of section 36- T13s- R27W, in Gove County. The wildcat well was drilled to a total depth of 4,460 ft at site situated about twelve miles southeast of Gove, Kansas. Operator stepped-out almost one and one-half miles north of the established Sutcliffe field (estbl. 1971, LKC, Miss oil) to find the new reserves. The new field has been named. Sutcliffe North.

7-Samuel Gary Jr. & Associates, Inc., of Denver (CO), has discovered new Marmaton (Pawnee) oil reserves at the 1-12 Fisher Cattle Company (API 15-153-21056) – a remote exploratory well drilled in Rawlins County. Crude oil is being produced at location in the SW/4 of section 12- T4s- R36W, two miles southeast of the Windy Ridge field (Arbuckle oil), or 5.5 miles southeast of the town of McDonald. Total depth was logged at 4,912 ft. The new field been named FCC.

8-Staab Oil Company, Hays (KS), is pumping 15 bbl of oil per day, no water, at the 1 Hayes (API 15-163-24251) wildcat discovery well in Rooks County. The new Webster View Southeast pool opener is drilled to a total depth in the Arbuckle of 3,480 ft and is producing 30-degree gravity crude from Arbuckle perforations at a depth between 3,423 to 3,426 ft. Closest known established production lies over one mile away from the new discovery in the Sweet North field (estbl. 1988, Conglomerate, Arbuckle oil). Staab’s new discovery is located over five miles southwest of Stockton, Kansas.

9-Sandlin Oil Corporation, Denver (CO), has completed their #1 Brown Etal (API 15-163-24233) for 20 bbls of oil and an equal amount of water per day. The 3,650 ft deep wildcat well was drilled in the NE/4 of section 17- T10s- R16W, in Rooks County. The well establishes production from the Lansing – Kansas City formation at site located over three-quarters mile west of the Natoma Northwest field (estbl. 1965, Shawnee, LKC oil), or a little over two miles east of Codell, Kansas. The well establishes the Codell East field..

10-American Warrior, Inc., Garden City (KS), is producing oil from the Mississippian (Saint Louis) formation at the 1-5 O’Brate – Finney (API 15-055-22360), located in the SW/4 of section 5- T23s- R32W, in Finney County. The wildcat well establishes new production over one and one-half miles southeast of the Damme East field (estbl. 1992, Marmaton oil). Total depth was stopped at 5,000 ft. The new Seven Mile field lies just over six miles north of Garden City, Kansas.



The newly graduated and the seasoned professionals mingling at the banquet.



**Our student helpers
Shuyao Li & Mozhdeh Mobayen**

Kansas Geological Foundation Memorials

KGS Member	Date Deceased	Memorial Est.	KGS Member	Date Deceased	Memorial Est.
Dan Bowles	09/89	1990	Edward B. Donnelly	08/01	2001
John Brewer	10/89	1990	Richard P. Nixon	02/02	2002
George Bruce	08/89	1990	Robert W. Frensley	12/01	2002
Robert Gebhart	01/90	1990	Gerald W. Zorger	01/02	2002
Ray Anderson, Jr.	11/90	1990	Don L. Calvin	03/02	2002
Harold McNeil	03/91	1991	Claud Sheats	02/02	2002
Millard W. Smith	08/91	1991	Merle Britting	2002	2002
Clinton Engstrand	09/91	1991	Harold Trapp	11/02	2002
M.F. "Ted" Bear	10/91	1991	Donald M. Brown	11/02	2003
James & Kathryn Gould	11/91	1991	Elwyn Nagel	03/03	2003
E. Gail Carpenter	06/91	1993	Robert Noll	09/03	2003
Benton Brooks	09/92	1992	Benny Singleton	09/03	2003
Robert C. Armstrong	01/93	1993	Jay Dirks	2003	2003
Nancy Lorenz	02/93	1993	J. Mark Richardson	02/04	2004
Norman R. Stewart	07/93	1993	John "Jack" Barwick	02/01	2004
Robert W. Watchous	12/93	1993	Richard Roby	03/04	2004
J. George Klein	07/94	1994	Ruth Bell Steinberg	2004	2004
Harold C.J. Terhune	01/95	1995	Gordon Keen	03/04	2004
Carl Todd	01/95	1995	Lloyd Tarrant	05/04	2004
Don R. Pate	03/95	1995	Robert J. "Rob" Dietterich	08/96	2004
R. James Gear	05/95	1995	Mervyn Mace	12/04	2004
Vernon Hess	06/95	1995	Donald Hoy Smith	04/05	2005
E. K. Edmiston	06/95	1995	Richard M. Foley	06/05	2005
Jack Rine	07/95	1995	Wayne Brinegar	06/05	2005
Lee Cornell	08/95	1995	Charles B. Moore	09/96	2005
John Graves	10/95	1995	Jack Heathman	05/06	2006
Wilson Rains	10/95	1995	Charles Kaiser	09/06	2006
Heber Beardmore, Jr.	09/96	1996	Rod Sweetman	08/06	2006
Elmer "Lucky" Opfer	12/96	1996	Karl Becker	10/06	2006
Raymond M. Goodin	01/97	1997	Frank Hamlin	10/06	2006
Donald F. Moore	10/92	1997	Marvin Douglas	12/06	2006
Gerald J. Kathol	03/97	1997	Robert W. Hammond	04/07	2007
James D. Davies	08/88	1997	Eldon Frazey	04/07	2007
R. Kenneth Smith	04/97	1997	Pete Amstutz	05/07	2007
Robert L. Dilts	05/97	1997	Charles Spradlin	05/07	2007
Delmer L. Powers	06/72	1997	Donald R. "Bob" Douglass	09/07	2007
Gene Falkowski	11/97	1997	Vincent Hiesch	11/07	2007
Arthur (Bill) Jacques	01/98	1998	Glen C. Thrasher	03/08	2008
Bus Woods	01/98	1998	Peg Walters	06/08	2008
Frank M. Brooks	03/98	1998	Theodore "Ted" Sandberg	07/08	2008
Robert F. Walters	04/98	1998	James Ralstin	11/08	2008
Stephen Powell	04/98	1998	Earl Brandt	04/09	2009
Deane Jirrels	05/98	1998	Walter DeLozier	05/09	2009
William G. Iversen	07/98	1998	Don D. Strong	01/10	2010
Ann E. Watchous	08/98	1998	John Stone	02/10	2010
W.R. "Bill" Murfin	09/98	1998	Craig Caulk	03/10	2010
Donald L. Hellar	11/98	1998	Joseph E. Moreland, Jr.	03/10	2010
Joseph E. Rakaskas	01/99	1999	Gene Garmon	03/10	2010
Charles W. Steincamp	02/99	1999	James F. Dilts	05/10	2010
Robert and Betty Glover	10/96	1998	Jerry Pike	05/10	2010
Howard E. Schwerdtfeger	11/98	1999	Donald Hollar	06/10	2010
W. W. "Brick" Wakefield	03/99	1999	Delbert Costa	08/10	2010
V. Richard Hoover	01/00	2000	John Tanner	08/10	2010
Warren E. Tomlinson	01/00	2000	William (Bill) Owen	09/10	2010
James A. Morris	01/00	2000	Harold (Hal) Brown	10/10	2010
Eric H. Jager	03/00	2000	Edmund G. Lorenz	11/10	2010
Kenneth W. Johnson	03/00	2000	Thomas E. Black	05/11	2011
Dean C. Schaake	03/00	2000	Wayne E. Walcher	07/11	2011
Fred S. Lillibridge	05/00	2000	Henry F. Filson	07/11	2011
Jerry A. Langrehr	07/00	2000	Thomas Ray	07/11	2011
Clark A. Roach	07/00	2000	Edgar E. Smith	09/11	2012
Floyd W. "Bud" Mallonee	10/00	2000	Marilyn Messinger	06/13	2013
Ralph W. Ruuwe	09/00	2000	Micheal Mitchell	09/13	2013
Robert L. Slamal	02/01	2001	Orvie Howell	11/13	2013
Jerold E. Jespersion	06/01	2001	James Thompson	11/13	2013
William A. Sladek	06/01	2001	Dick Rowland	09/13	2014
Harlan B. Dixon	06/01	2001	Annette Hedke	02/15	2015



All Around You

Weatherford has always been driven by your needs.

Now, with the addition of Precision Energy Services we're continuing to build a world of skills, services and technologies that revolve – and evolve – around you.

The result?

An expanded global network of 25,000 people, 730 service bases and 87 manufacturing facilities in 100 countries.

This increased local knowledge and service is there to support you anywhere, anytime. From midday in the Middle East to midnight in the middle of nowhere.

And with greatly strengthened capabilities in the critical evaluation skills of directional drilling and wireline logging, we can do even more to improve the profitability and productivity of your wells.

To see how our sphere of services can work for you, visit www.weatherford.com or contact either your Weatherford or former Precision Energy Services representative.

Drilling | Evaluation | Completion | Production | Intervention

© 2005 Weatherford International Ltd. All rights reserved. Incorporates proprietary and patented Weatherford technology.


CHANGE SERVICE REQUESTED

KGS BULLETIN
 Mar.—Apr. 2015

March 2015

Sun	Mon	Tue	Wed	Thu	Fri	Sat
1	2	3 Tech Talk	4	5	6	7
8  Daylight Savings	9	10 KGS Board Mtg.	11 KGF Board Mtg.	12	13	14
15	16	17 	18	19	20  1st day of Spring	21
22	23	24	25	26	27	28
29	30	31				

April 2015

Sun	Mon	Tue	Wed	Thu	Fri	Sat
			1	2	3	4
5  Easter	6	7	8	9 Tech Talk	10	11
12	13	14	15	16	17	18
19	20	21	22	23 Tech Talk	24	25
26	27	28	29	30		